

Event Packages

REAL FOOD, GOOD COMPANY

**“WITH MULTIPLE EVENT SPACES IN OUR CONVERTED INNER CITY WAREHOUSE, THREE BLUE DUCKS ROSEBERY IS THE PERFECT LOCATION FOR YOUR NEXT EVENT.”**

**B** three  
blue  
ducks

Located in a historic industrial warehouse, Three Blue Ducks Rosebery is a unique venue, which has become a beacon for those wanting to create a unique indoor or outdoor event designed especially for their requirements in the heart of Sydney!

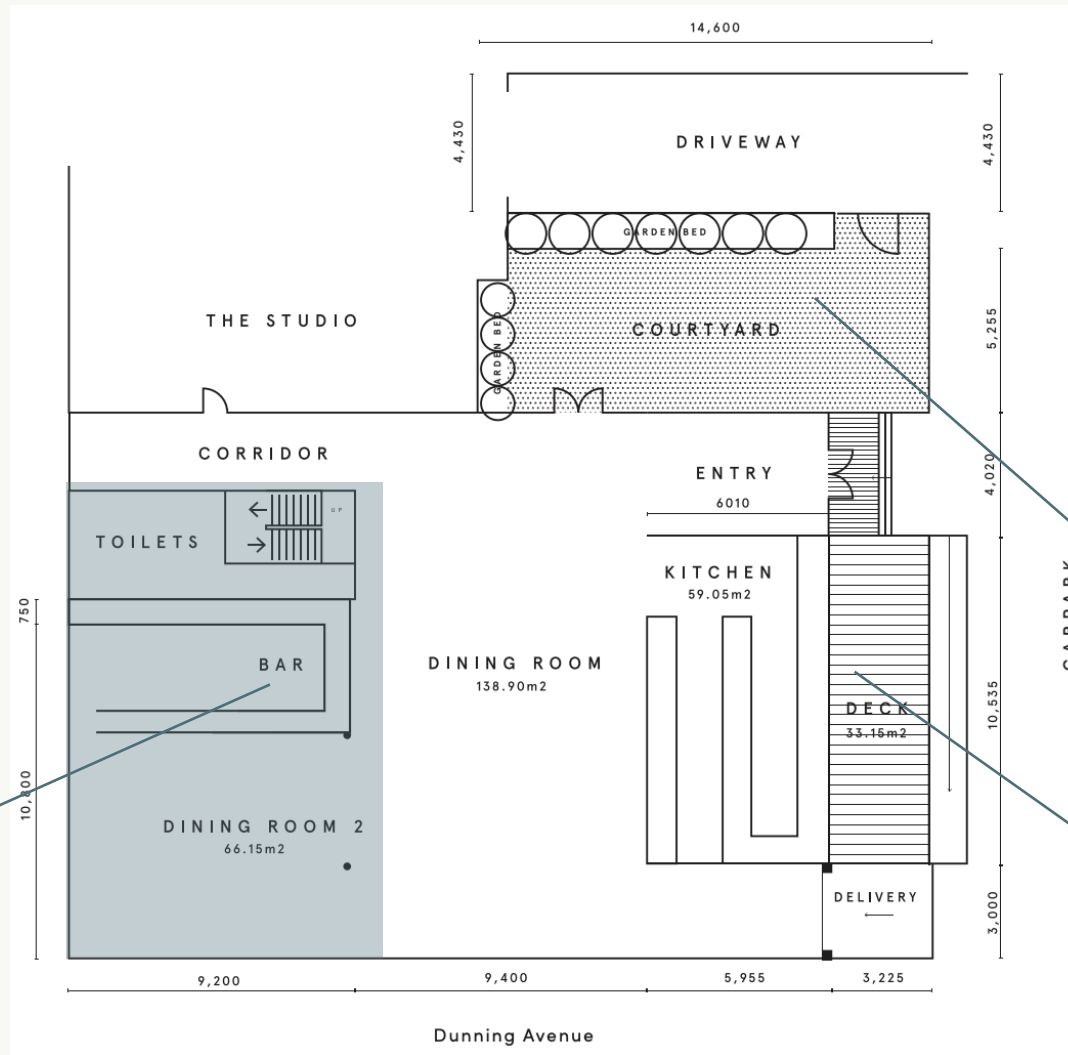


**B** three  
blue  
ducks

# THREE BLUE DUCKS | ROSEBERY

- The entire venue can be booked exclusively, including the deck, courtyard and main dining area. Catering 200 seated guests and 250 standing guests, with the option to add on the upstairs Rosella Room.

Rosella Room



The Courtyard

The Deck

## Spaces

# ROSELLA ROOM

Our brand new private event space is located above the existing restaurant. Its true rustic style comes alive with exposed beams, super high ceilings, stripped back walls and concrete floors. The Rosella Room has a private bar, luscious indoor plants and natural light to bring out warmer elements to the industrial space.

## ENTIRE SPACE

Cocktail: 120pax

Seated: 80pax

Book out The Rosella Room for exclusive use which includes use of private bar.

**Packages:** We have a variety of shared table feast menus for seated events and canapé menus for cocktail events.

**Add On:** Grazing tables, Champagne & oysters and or arrival cocktails for something extra special!





## Spaces

# THE COURTYARD

Our beautiful sundrenched courtyard is a great outdoor space to enjoy a stand-up or sit-down function nestled amongst our olive trees, grape vines, veggie garden and alongside our spit roast BBQ. It's the ultimate small wedding reception, arrival drinks or work lunch space.

## ENTIRE SPACE

Cocktail: 50pax

Seated: 36pax

Book out The Courtyard for exclusive use.

Beer on tap, flowing cocktails and delicious food prepared in the open fire, grill kitchen.

**Packages:** With a range of shared feasts, grazing tables, and canapés, we have a range of options to suit this very special outdoor area.

**Add On:** Arrival cocktails, canapés, Champagne & oysters are a sample of the add ons available.



## Spaces

# THE DECK

Join us on the deck for intimate small gatherings such as team lunches, product launches, birthdays or as an entry feature for a larger function, a beverage station for a drink on arrival during roving events. This is also a great space for corporate brunches during spring and summer.

## ENTIRE SPACE

Cocktail: 50pax

Seated: 36pax

Book out The Deck for exclusive use.

Beer on tap, flowing cocktails and delicious food prepared in the open fire, grill kitchen.

**Packages:** With a range shared feasts, grazing tables, and canapés, we have menus to accommodate events of all shapes and sizes

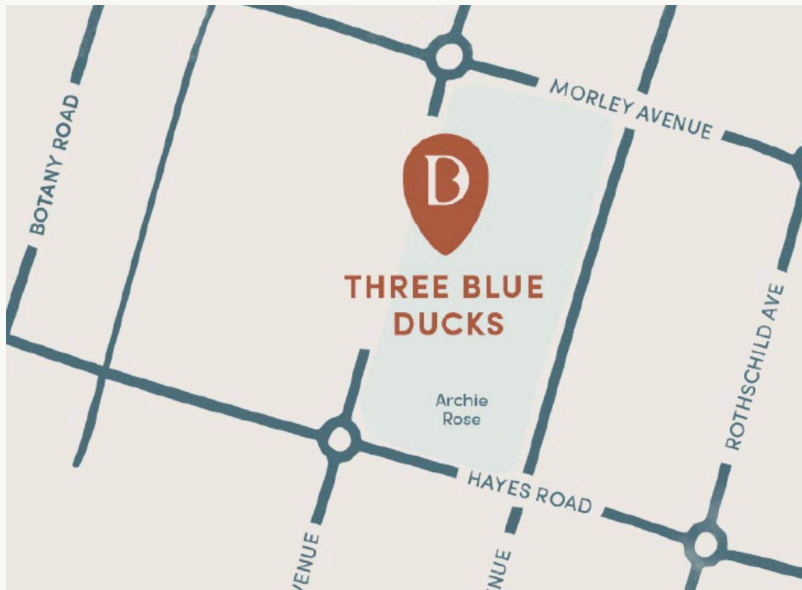
**Add On:** Cocktail package







## Venue Information



## GET IN TOUCH

02 7251 8662

1/85 Dunning Ave, Rosebery, NSW 2018

[enquiries@threeblueducks.com](mailto:enquiries@threeblueducks.com)

**Bryony Corbett | Event Manager**

Email: [bryony@threeblueducks.com](mailto:bryony@threeblueducks.com)

Phone: 02 7251 8662

**Katy Ferguson | Senior Event Manager**

Email: [katy@threeblueducks.com](mailto:katy@threeblueducks.com)

Phone: 02 7251 8662

