



REAL FOOD, GOOD COMPANY

**“WITH MULTIPLE EVENT SPACES IN OUR CONVERTED
INNER CITY WAREHOUSE, THREE BLUE DUCKS ROSEBERY
IS THE PERFECT LOCATION FOR YOUR NEXT EVENT.”**

Located in a historic industrial warehouse, Three Blue Ducks Rosebery is a unique venue, which has become a beacon for those wanting to create a unique indoor or outdoor event designed especially for their occasion in the heart of Sydney!

B three
blue
ducks

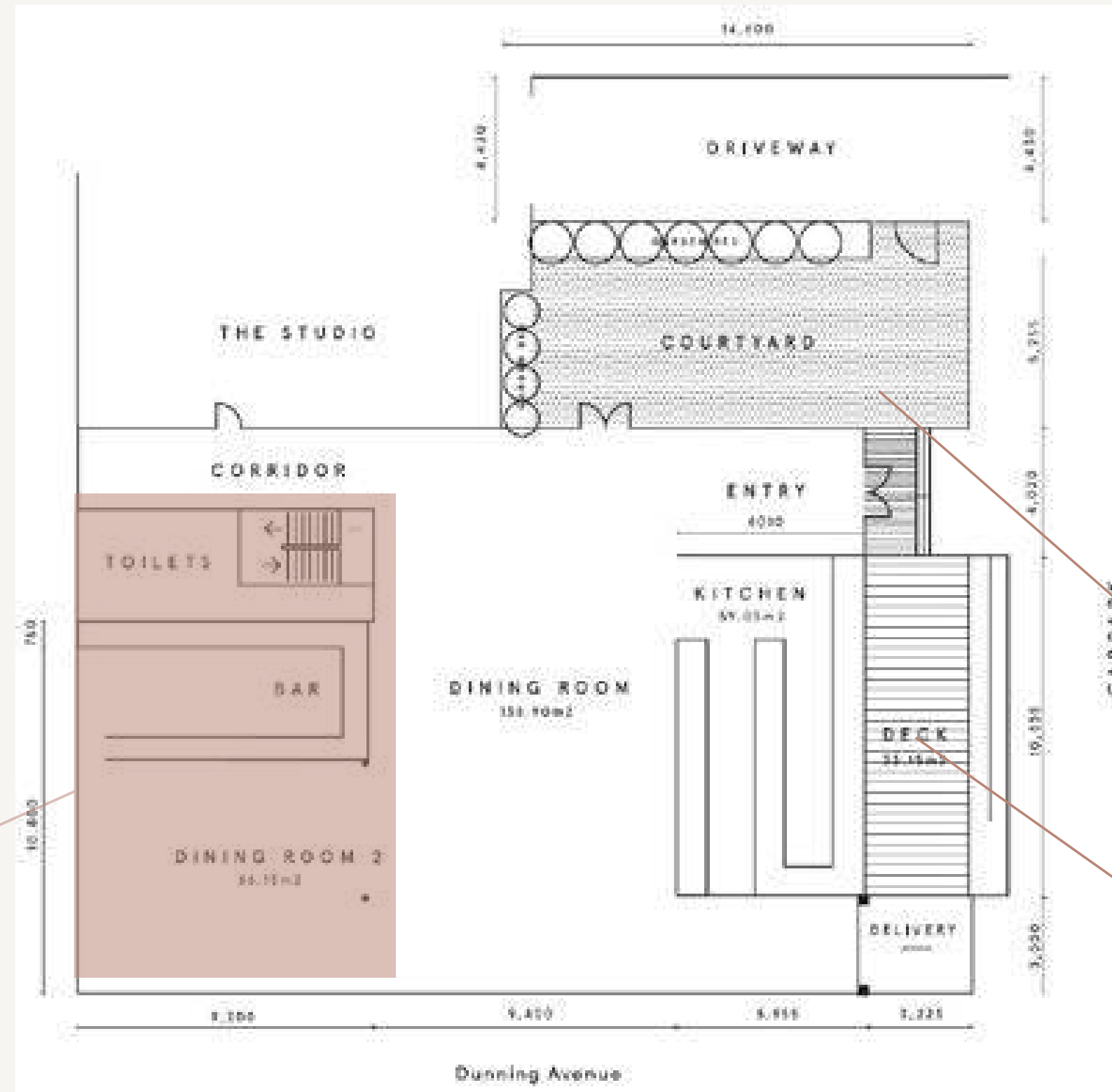


The Layout

THREE BLUE DUCKS | ROSEBERY

The entire venue can be booked exclusively, including the deck, courtyard and main dining area. Catering 200 seated guests and 250 standing guests, with the option to add on the upstairs Rosella Room.

Rosella Room



The Courtyard

The Deck



Spaces

ROSELLA ROOM

This private event space is located above the existing restaurant. Its true rustic style comes alive with exposed beams, super high ceilings, stripped-back walls and concrete floors. The Rosella Room has a private bar, luscious indoor plants and natural light to bring out warmer elements to the industrial space.

ENTIRE SPACE

Cocktail: 120pax

Seated: 80pax

Book out The Rosella Room for exclusive use which includes use of private bar.

Packages: We have a variety of share table feast menus for seated events and canapé menus for cocktail events.
Add On: Grazing tables, Champagne & oysters and or arrival cocktails for something extra special!





Spaces

THE COURTYARD

Our beautiful sundrenched courtyard is a great outdoor space to enjoy a stand-up or sit-down function nestled amongst our olive trees and grape vines, alongside our spit roast BBQ. It's the ultimate small wedding reception, arrival drinks or work lunch space.

ENTIRE SPACE

Cocktail: 50pax

Seated: 36pax

Beer and wine package options, flowing cocktails and delicious food prepared our open plan kitchen

Packages: With a range of shared feasts, grazing tables, and canapés, we have options to suit your special occasion

Add On: Arrival cocktails, canapés, Champagne & oysters are a sample of the add ons available.



Spaces

THE DECK

Join us on the deck for intimate small gatherings such as team lunches, product launches, birthdays or as an entry feature for a larger function, a beverage station for a drink on arrival during roving events. This is also a great space for corporate brunches during spring and summer.

ENTIRE SPACE

Cocktail: 50pax

Seated: 36pax

Beer on tap, flowing cocktails and delicious food prepared in the open plan kitchen.

Packages: With a range of shared feasts, grazing tables, and canapés, we have a range of options to suit this special outdoor area.

Add On: Cocktail package, canapés , grazing tables





GET IN TOUCH

(02) 7251 8662

1/85 Dunning Ave, Rosebery, NSW

enquiries@threeblueducks.com

CONTACTS

EVENT COORDINATOR

eventsrosebery@threeblueducks.com

Phone: (02) 7251 8662

CONTACTS

KATY FERGUSON

Senior Event Manager

katy@threeblueducks.com

Phone: (02) 7251 8662